

**EFAFLEX**   
safe high-speed doors

*Airports*



*The best you can get for Airports*

# EFAFLEX offers solutions for today's Airport challenges.



## Fire department EFA-STT®

### DOOR FEATURES

- High opening speed
- Transparent door blades



## Fueling vehicle EFA-SST® EX

### DOOR FEATURES

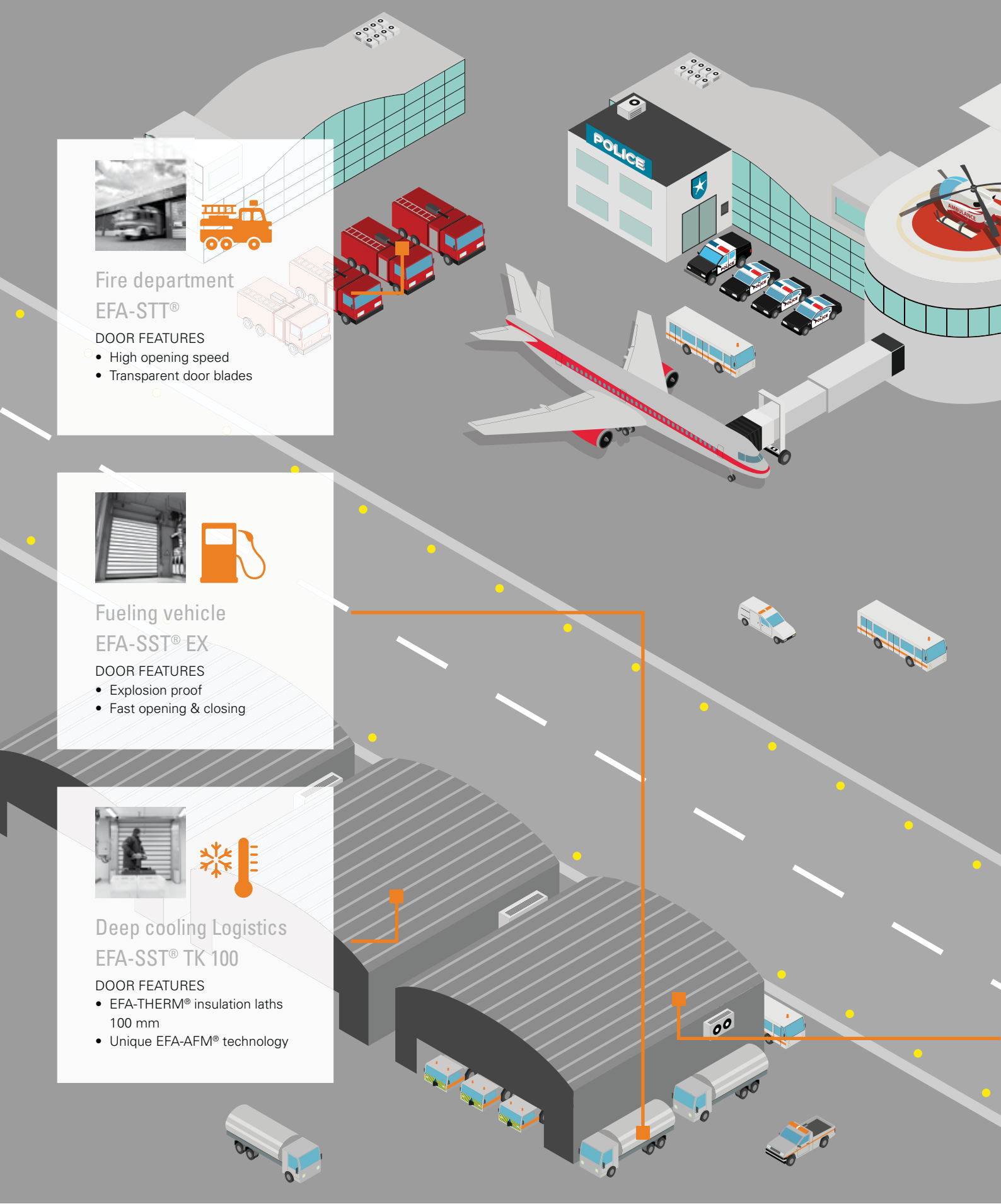
- Explosion proof
- Fast opening & closing



## Deep cooling Logistics EFA-SST® TK 100

### DOOR FEATURES

- EFA-THERM® insulation laths 100 mm
- Unique EFA-AFM® technology





## Luggage handling EFA-SST®

### DOOR FEATURES

- Fast & save handling of luggage
- Zero downtime
- Maximum cycles



## Catering EFA-SST® ISO 60

### DOOR FEATURES

- Isolated doors to keep food chilled
- U value of entire door up to 0.80 W / m<sup>2</sup>K



## Freight services EFA-SST®

### DOOR FEATURES

- High opening speed
- Space saving
- Tailor made

# EFAFLEX high-speed doors for fastest handling time.



## EFA-STT:

- Clearvision view through the doorblade brings key advantages at all interfaces at your airport which are passed in both directions

## EFA-STT:

- EFAFLEX doors are also suitable for emergency stations, e.g. airport fire brigades
- Opening speed: Up to 3.0 m/s
- Closing speed: Up to 1.0 m/s

*Right: Airport Nuremburg  
Below: Airport Vienna*



# EFAFLEX in the field of airline catering.



## SST New Generation:

- Used in situations where constantly low temperatures have to be maintained, e.g. airline catering.
- Ensures the quality of stored meals maintaining constant temperatures using highly insulated doorblade and fast opening speeds.

*Airport Frankfurt*



# Doors tailormade for Airport applications.



## SST New Generation:

- Excellent thermal insulation saves energy
- Door leaf is exceptionally robust, longlived, tight sealing and sound insulating
- Opening speed: Up to 2.5 m/s
- Closing speed: Up to 1.0 m/s

## SST Classic:

- Opening speed: Up to 2.0 m/s
- Highest windload capacity
- Reliable with up to 250,000 cycles between service interval

*Right: Airport Zurich  
Below: Airport Munich*



# EFAFLEX High-Speed performance doors for luggage handling systems.



## SST Classic:

- Bulky luggage feed at a Lufthansa station
- Robust door blade

## EFA-SRT:

- Heavy duty internal door
- Ideal for check-in stations and conveyor applications
- SRT guarantees the safe and fast handling of luggage

*Airport Munich*



# High-Speed – Reliability – Flexibility.

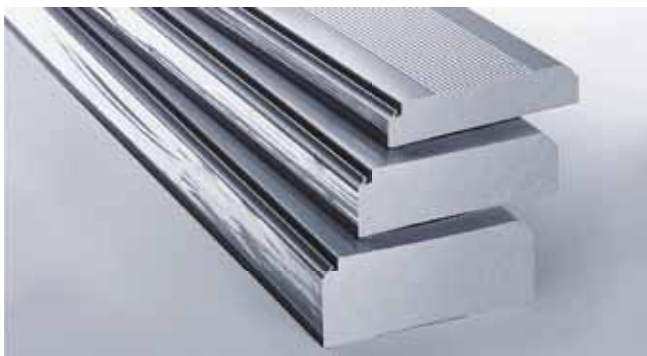
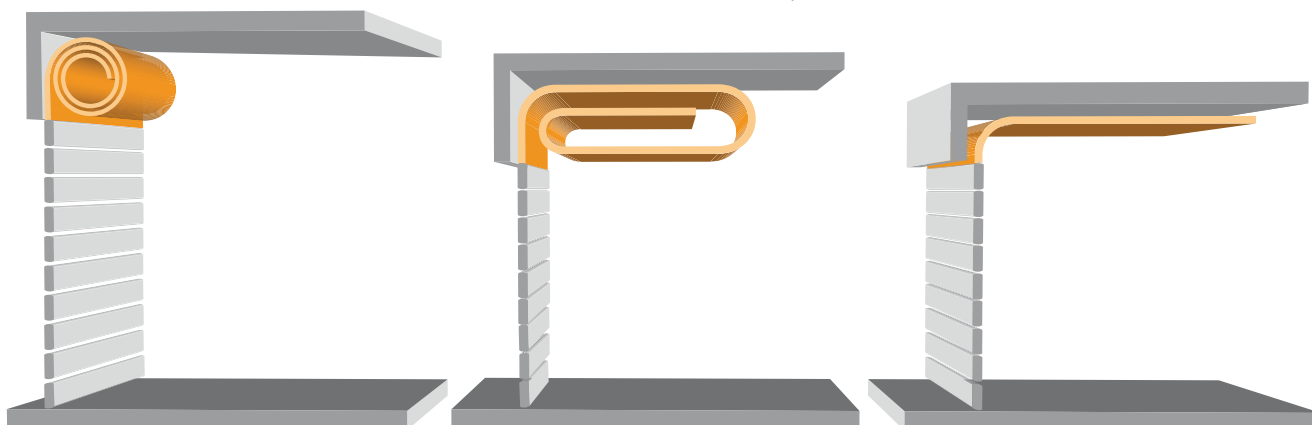
High-Speed and extraordinary reliability thanks to spiral system, invented by EFALFLEX:

- Opening speed: Up to 4.0 m/s
- Closing speed: Up to 1.0 m/s
- Highest wind load capacity
- Up to 250,000 cycles per year
- EFALFLEX doors run quietly and almost wear-free



## Flexible in every detail

- Round spiral, oval spiral or low header high speed doors
- Doors can be customized according to every need
- Outside/inside solutions



## EFA-THERM® laths

- Thermally separated
- Also available: EFA-CLEAR® vision laths
- Up to 0.66 W/m<sup>2</sup>K of thermal insulation

# Service is guaranteed – worldwide.

All-round carefree, even after purchase, 10-year guarantee of spare parts availability.

Anyone who wants to play it safe also opts for EFAFLEX service: We offer our customers a variety of maintenance contracts – and even an optional complete all-round carefree package for all doors. Tailored to your individual needs: proactive and responsive aftercare packages are intended to optimize availability and the service life of your door systems, reducing unnecessary costs and downtime.





2

3

Zo

# EFAFLEX references (selection)

|                 |  |
|-----------------|--|
| Argentina       | Airport Buenos Aires Ezeiza  |
| Australia       | Airport Melbourne<br>Australia Post<br>Australian Air Express<br>Flughafen Launceston, Tasmania<br>Flughafen Canberra  |
| Austria         | AIREST, Vienna-Schwechat<br>Airport Vienna-Schwechat<br>Airport Innsbruck<br>Airport Klagenfurt<br>Airport Graz  |
| Belgium         | Airport Brussels   |
| Bulgaria        | Airport Burgas Varna   |
| Canada          | Airport FedEx – Toronto  |
| Croatia         | Airport Pleso – Zagreb<br>Airport Dubrovnik  |
| Denmark         | Airport Copenhagen<br>Airport Aarhus WFS Cargo   |
| France          | Airport Charles de Gaulle Paris<br>Airport Orly Paris<br>Airport Vatry<br>Airport Nice<br>Airport Basel/Mulhouse   |
| Germany         | Airport Munich<br>Airport Frankfurt<br>Airport Cologne<br>Airport Nuremberg<br>Airport Leipzig<br>Airport Düsseldorf<br>Airport Dresden<br>Airport Stuttgart<br>Airport Hannover<br>Airport Berlin   |
| Greece          | Airport Athen  |
| Iceland         | Airport Kopavogur  |
| Iran            | Imam Khomeini International  |
| Ireland         | Airport Shannon  |
| Israel          | Ben Gurion   |
| Italy           | Aeroporto Fiumicino, Roma  |
| Luxembourg      | Luxair S. A.   |
| The Netherlands | KLM Catering Service Schiphol bv   |
| Russia          | Airport Domodedovo Moscow<br>Airport Sheremetevo Moscow<br>Airport Vnukovo Moscow<br>Airport Sochi<br>Airport Wladiwostok  |
| Switzerland     | Aéroport International de Genève<br>GateGourmet<br>Airport Zürich  |
| Taiwan          | Airport Taipei   |
| Turkey          | Airport Ankara – Esenboga  |
| USA             | John F. Kennedy International Airport, New York City<br>Dayton   |
| UK              | QCS Building, Heathrow Airport<br>Terminal 5, Heathrow Airport<br>Terminal 3, Heathrow Airport<br>Menzies World Cargo U.K. Heathrow-Airport<br>Airport Manchester<br>Gate Gourmet London Ltd., Heathrow Airport<br>EUROPCAR Interrent “Arrivals Hall” Birmingham |

EFAFLEX  
Tor- und Sicherheitssysteme  
GmbH & Co. KG  
Fliederstraße 14  
D-84079 Bruckberg  
Telephone +49 8765 82-0  
Facsimile +49 8765 82-100  
[www.efaflex.com](http://www.efaflex.com)  
[info@efaflex.com](mailto:info@efaflex.com)



EFAFLEX® is a registered and legally  
protected trademark.  
Subject to technical modifications.  
Images sometimes show special  
solutions. Overall design:  
[www.creativconcept.de](http://www.creativconcept.de) 09117

**EFAFLEX**   
safe high-speed doors